

LOCATION OF THE CREDIT/ BAIL SUPPORT PROGRAM

The CREDIT/Bail Support Program currently operates at seven regional locations across Victoria. Referral to the program can be made via a Magistrate, Police, a lawyer, court nominee, family members or the client.

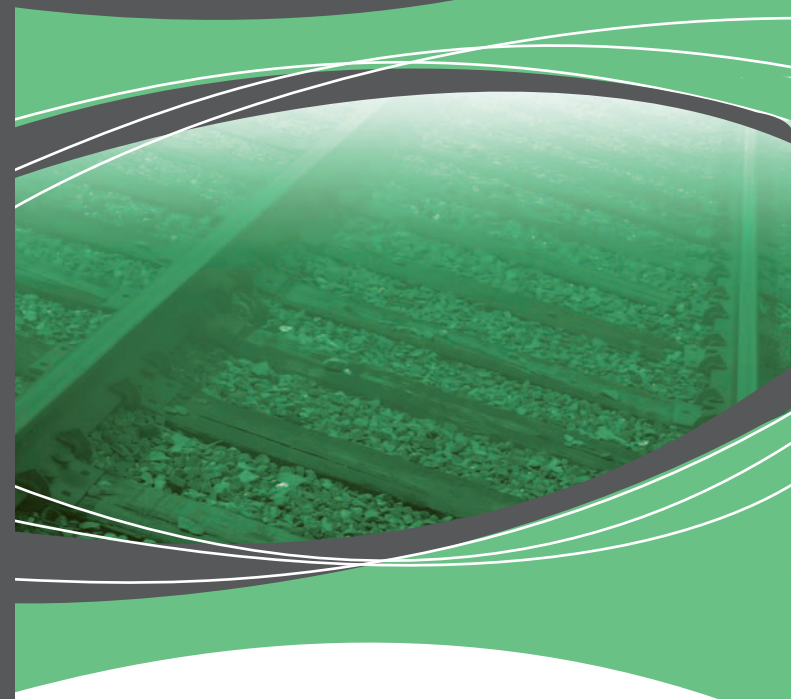
Clients are required to commit to treatment and attend regular support meetings with their case manager. Support meetings may initially occur weekly.

However, once a client is receiving support and treatment, these meetings may be less frequent so that clients have the opportunity to seek employment/training. Case managers will determine the frequency of meetings based on a client's support needs.

CREDIT/ BAIL SUPPORT PROGRAM – VICTORIA

Ballarat	Ph: 5336 6387
Broadmeadows	Ph: 9221 8950
Dandenong	Ph: 9767 1361
Frankston	Ph: 9784 5788
Geelong	Ph: 5225 3385
Heidelberg	Ph: 8458 2060
Ringwood	Ph: 9871 4479

The Court Integrated Services Program (CISP) operates at the Melbourne, Sunshine and Latrobe Valley Magistrates' Courts in place of the CREDIT/Bail Support Program. Please call the Melbourne office for details if you have matters at these locations.
Ph: (03) 9628-7975.



CREDIT/Bail Support Program

CREDIT stands for Court Referral & Evaluation for Drug Intervention & Treatment. The CREDIT/ Bail Support Program seeks to increase the likelihood of a defendant being granted bail and successfully completing a bail period.



Magistrates' Court of Victoria
www.magistratescourt.vic.gov.au

CREDIT stands for “Court Referral & Evaluation for Drug Intervention & Treatment”. The CREDIT/ Bail Support Program seeks to increase the likelihood of a defendant being granted bail and successfully completing a bail period. The program provides clients with access to drug treatment, accommodation, material aid and support, as required, according to the assessed needs of the client.

THE OBJECTIVES OF THE CREDIT/BAIL SUPPORT PROGRAM

- Provide access to accommodation, welfare, legal and other community-based supports.
- Monitor and support the program’s clients for a period of three-four months.
- Minimise harm to the client and the community by addressing the client’s substance abuse-related issues.
- Provide early treatment and access to drug treatment/ rehabilitation programs.
- Reduce risk of the client re-offending.

OUTCOMES OF THE CREDIT/ BAIL SUPPORT PROGRAM:

- Reduction in the number of defendants who are remanded in custody as a result of a lack of accommodation or treatment/support in the community.
- Long term reduction in clients’ offending behaviour
- Successful placement of clients in drug treatment/ rehabilitation programs.
- Successful completion of bail by clients who would otherwise be remanded in custody.

WHO IS ELIGIBLE FOR THE PROGRAM?

Any defendant eligible for a period of bail may be referred to the CREDIT/ Bail Support Program for assessment.

A plea of guilty is not a pre-condition

The program aims to refer clients into treatment programs and support within the community as soon as possible after arrest, irrespective of the plea.

Defendants who are subject to a current court order

If the defendant is on a current order through Corrections that does not include access to alcohol and other drugs counselling / treatment, they can be assessed for the CREDIT/ Bail Support Program.

Defendants who are in breach of a current court order

If the defendant has breached an order which includes a drug treatment component and is therefore no longer eligible for drug treatment services, they can be assessed for the CREDIT/ Bail Support Program. Clients in breach of parole are able to continue accessing treatment through Corrections until they are breached by the parole board.

If a defendant is potentially in breach of a suspended sentence, ICO or parole, the referral for assessment must come from the Magistrate, or the Magistrate must be made aware of the potential breach prior to referral to the program.

SERVICES PROVIDED

The range of services provided to clients on bail:

- Assessment; treatment & support plan; support & monitoring while on bail and follow up (up to four months).
- Case management; court reports; brokered treatment through Community Offenders Advice and Treatment Service (COATS) for services including: Detox & rehabilitation programs; drug & alcohol counselling.
- Referral to short term crisis accommodation.
- Passport photos for identification & medical purposes.
- Referral to pharmacotherapies.
- Referral to outreach services for clients requiring intensive support.
- Referral to employment programs for training/ employment assistance.
- Travel cards, food vouchers and access to material aid, payment of keypass where required and court date reminders/diaries.

TRANSITIONAL HOUSING PROPERTIES

The CREDIT/Bail Support Program currently has access to 20 properties in the community. These are available to the program’s clients until access to long term housing can be established. HomeGround Services is contracted by the CREDIT/ Bail Support Program to provide housing support, including helping clients to find long term housing, and help with budgeting and independent living skills. Many clients in the properties have been successful in seeking full time employment because they are in stable housing.

COMMUNITY SUPPORT AGENCIES

The CREDIT/Bail Support Program has developed very strong links with Government and non Government agencies including:

- Department of Human Services
- Victoria Police
- Australian Community Support Organisation (ACSO)
- Community Health Centres
- Legal Aid
- Various Employment Agencies
- HomeGround Services
- St.Vincent DePaul
- Salvation Army
- Drug treatment agencies throughout the State